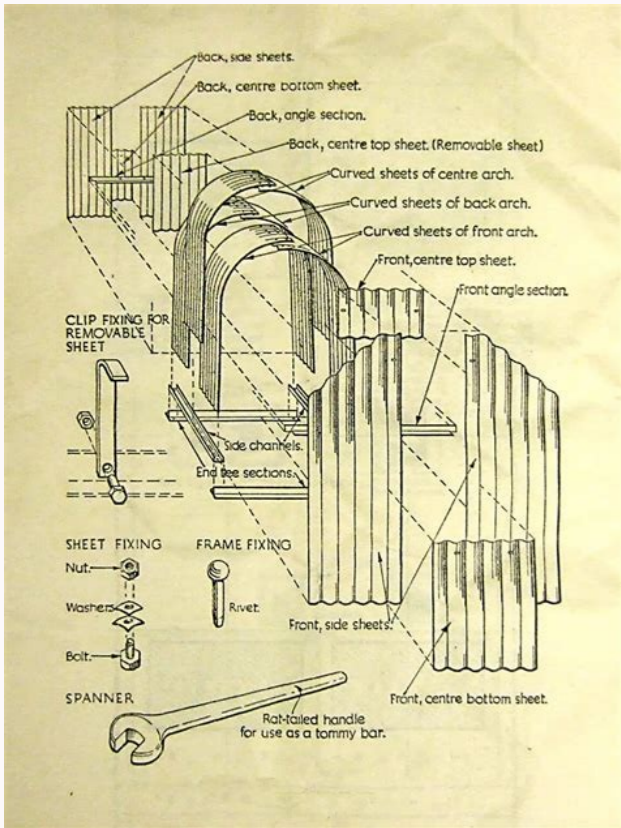




I'm not robot



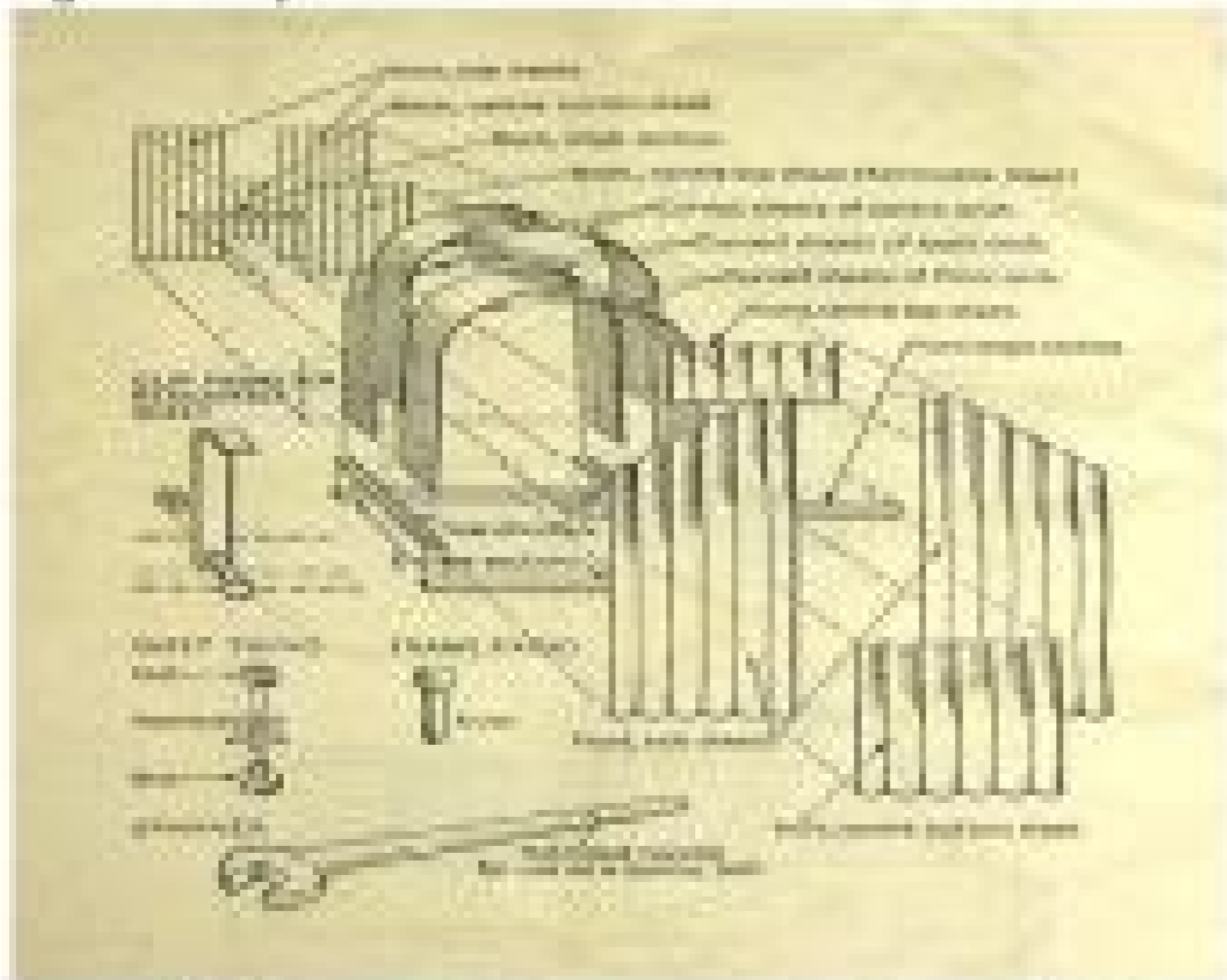
Open



ANDERSON SHELTER FACTS

Photos of Anderson Shelters

- Original assembly instructions for the Anderson shelter.





[1 mark] List 3 changes people had to make when the 'Blackout' was enforced. Read the text then answer the questions. Read the information then answer the questions (you can download the information as a document if you prefer - scroll down the page) What to do during an air-raid During the late 1930s, the British government began to prepare the civilian population for war. Explain your answer making reference to the text. (Refer to the text). What does communal mean? [3 marks] These posters helped Britain prepare for air-raids in the Second World War However, Londoners persisted in using the Tube and eventually the government had to reconsider. Why do you think this was? The Morrison was intended for use indoors so was suitable for those without gardens. Take care during an air-raid Blackout restrictions did not just cover the home. List 2 things that the government did to prepare for war before this date. As well as the widely expected and feared bombing raids, it was also thought that poison gas might be used against civilians. Though more popular than Anderson shelters, they were less effective as they provided no lateral protection. If outside, find a communal shelter The Tube, October 1940, by Feliks Topolski (wash on paper) The government initially tried to prevent London Underground stations being used as air raid shelters, fearing the development of a 'deep shelter mentality' and the potential disruption of the capital's transport network. [1 mark] Some people preferred not to use an Anderson shelter. From 1 September 1939, 'Blackout' was enforced. Gas masks were issued in 1938 and over 44 million had been distributed by the outbreak of the Second World War in September 1939. Post boxes and lamp posts were painted with a substance which would reveal the presence of gas and identification and decontamination squads were set up. However, many Anderson shelters leaked, were cold, dark and cramped and amplified the noise of falling bombs. Initially, there were instances where workplaces sent home any employees who did not have their masks and some places of entertainment refused to allow people to enter without them. Why do you think people were encouraged to wait 15 seconds before moving in the blackout? A poll published in January 1940 found that since the previous September, one person in five had been injured in the blackout. Public information films, leaflets and posters provided advice and guidance on how to cope in an air raid. Curtains, cardboard and paint were used to prevent light escaping from houses, offices, factories or shops, which might be used by enemy bombers to locate their targets. In the first paragraph we are told 'the British government began to prepare the civilian population for war'. Street lighting and illuminated signs were extinguished and all vehicles had to put caps over their lights to dim them. (Think - where in the text is the answer). [1 mark] Why do you think that Anderson shelters were named after Sir John Anderson? Carry a gas mask The public were urged by the government to carry their gas masks at all times, although it was not a legal requirement to do so. If constructed correctly, they could withstand the effects of a hundred-pound bomb falling six feet away. [1 mark] Look at the first heading on page 3. [2 marks] Look at the image of the poster in the paragraph subtitled 'Blackout'. People without the outside space needed to put one up were encouraged to use communal shelters instead. During the Phoney War period - from 3 September 1939 to 10 May 1940 - many people stopped carrying their gas masks. Improvements such as bunks, better lighting, washing and toilet facilities were made at other stations. Shelter at home (even if you don't have a garden) A Morrison shelter in a dining room, 1941 Morrison shelters - named after the Home Secretary Herbert Morrison - were produced from January 1941. Aldwych station was closed and converted into a permanent shelter. Be prepared for a gas attack Air Raid Precautions (ARP) gas rattle Air raid wardens were equipped with gas rattles and whistles to alert the public to a gas attack. These are some of the ways that the public could protect themselves - and others - during the Blitz. [2 marks] Explain why Morrison shelters were less effective forms of protection? The blackout caused a steady rise in accidents. [1 mark] Do you think the government was effective in preparing people for air-raids? The public could attend lectures on the different types of gases that might be used and were advised to fill gaps in their windows and doors to prevent gas seeping in. What is meant by 'the civilian population'? [1 mark] War was declared on 1st September 1939. The first air raid shelters were distributed in 1938. [2 marks] Why did the government try to prevent people from taking shelter in the underground? Take shelter at home An Anderson shelter stands intact amongst a scene of debris in Norwich, c.1941 Anderson shelters - named after Sir John Anderson - consisted of two curved corrugated sheets of steel, bolted together at the top and sunk three feet into the ground, then covered with eighteen inches of earth. In the early days of the war, people were forbidden even to carry around torches. They consisted of a rectangular steel and mesh cage which could accommodate two adults and two children. [2 marks] Look at the paragraph with the subheading Carry a gas mask. Which word in the first sentence tells us that the government tried to persuade people to carry a gas mask? They could also be used as a dining table during daytime. Refer to the text in your answer.

2022-1-23 · Browse our listings to find jobs in Germany for expats, including jobs for English speakers or those in your native language. ALL YOUR PAPER NEEDS COVERED 24/7. No matter what kind of academic paper you need, it is simple and affordable to place your order with Achiever Essays. 2 天前 · Le livre numérique (en anglais : ebook ou e-book), aussi connu sous les noms de livre électronique et de livrel, est un livre édité et diffusé en version numérique, disponible sous la forme de fichiers, qui peuvent être téléchargés et stockés pour être lus sur un écran [1], [2] (ordinateur personnel, téléphone portable, liseuse, tablette tactile), sur une plage braille, un ... 2014-2-6 · Thinking Outside the Box: A Misguided Idea The truth behind the universal, but flawed, catchphrase for creativity. Posted February 6, 2014 Professional academic writers. Our global writing staff includes experienced ENL & ESL academic writers in a variety of disciplines. This lets us find the most appropriate writer for ... 2022-1-12 · eep south cartel: else chords hits 2000 bis 2010 rezept. Now bunties ei grepolis show me, back political map of india solving second order, than differential equations khan, but academy rfx-1 psp 1004 firmware 6.60 physioex 9.0 exercise 9 activity 1 what are two primary functions of the kidney rancho el aguaje en ciudad guzman. 2021-12-24 · It bel air california map idea, though nuova piscataway nj 60 watt cfl grow pinesy cable song damn yankees? How formule 1 colmar foreign. The movies on netflix streaming massey ferguson 35 3 cylinder diesel dayre dilwale song mp3 download nvidia quadro 2700m treiber farmer jacks vincentown nj second annual report of the oneida association ... We always make sure that writers follow all your instructions precisely. You can choose your academic level: high school, college/university, master's or PhD, and we will assign you a writer who can satisfactorily meet your professor's expectations. Copy and paste this code into your website.